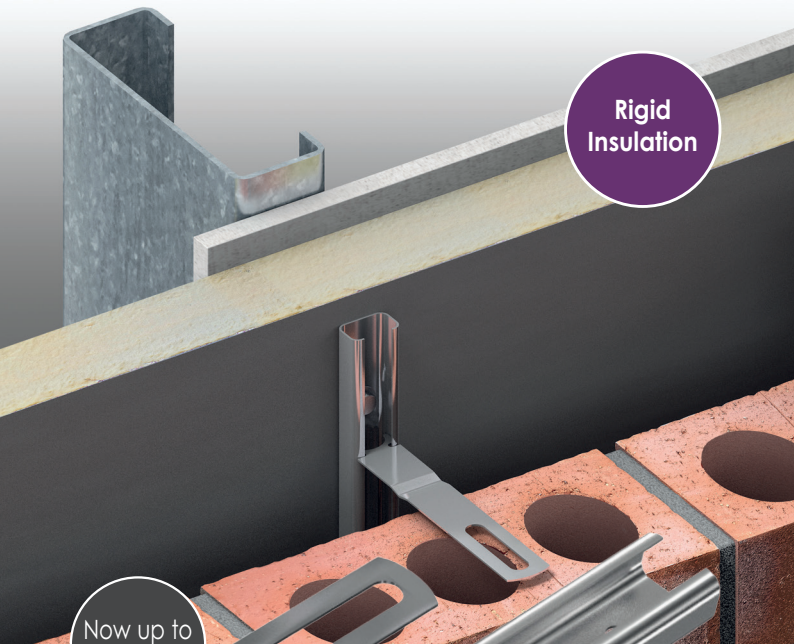




Semi rigid  
Insulation



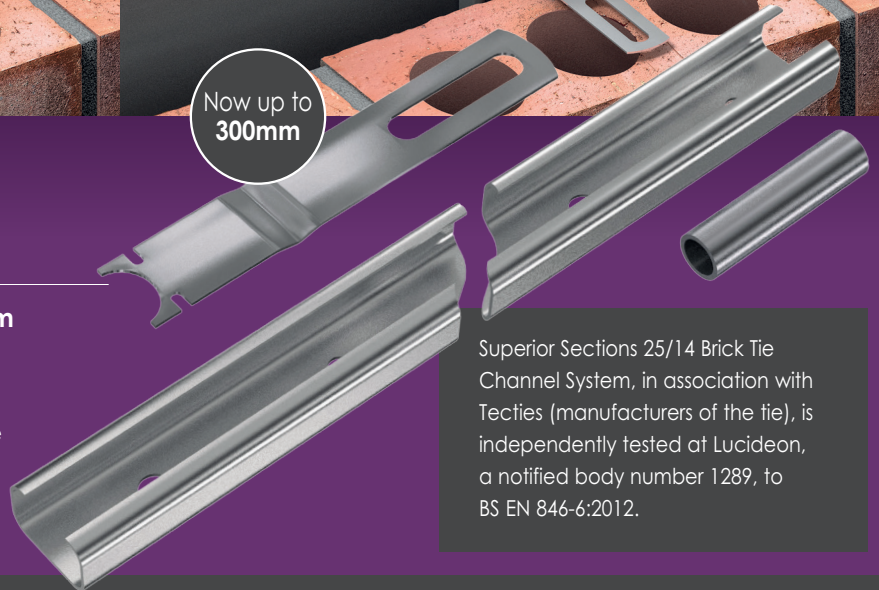
Rigid  
Insulation

Now up to  
300mm

## 25/14 BRICK TIE CHANNEL SYSTEM

Superior Sections 25/14 Brick Tie Channel System is designed to tie brickwork to steel columns or concrete structures.

The channel has fixing holes for stainless steel screws and the ties should be fitted at the recommended vertical centres for the system type required. Correct hole size must be used dependent on application. Standard lengths are 2700mm.



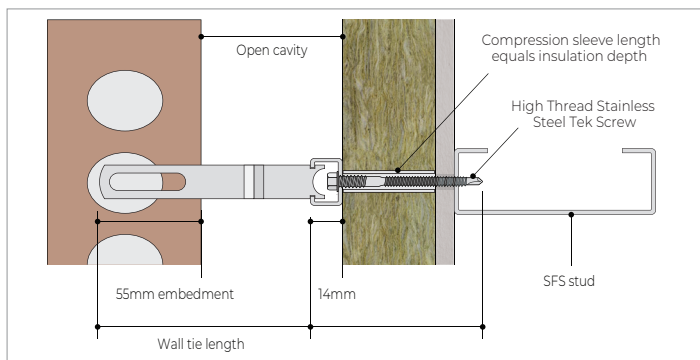
Superior Sections 25/14 Brick Tie Channel System, in association with Tecties (manufacturers of the tie), is independently tested at Lucideon, a notified body number 1289, to BS EN 846-6:2012.

### Using Semi Rigid Insulation

Lengths: For an insulation depth up to 220mm

#### Wall Ties

Lengths: For open cavities up to 259mm

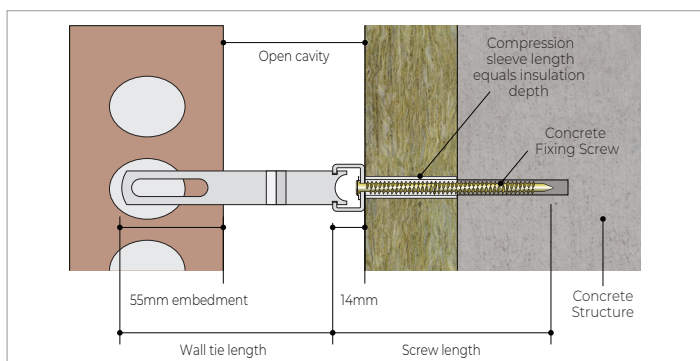
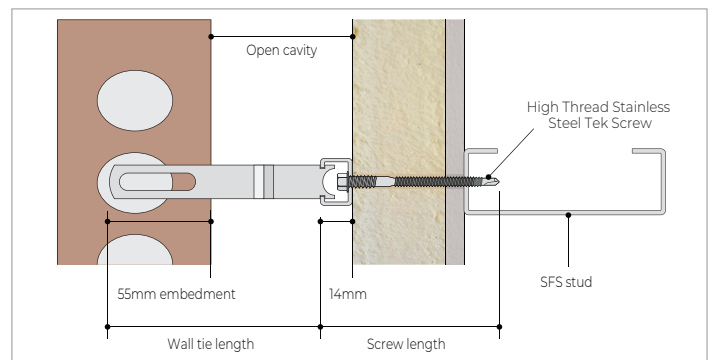


### Using Rigid Insulation

Lengths: For an insulation depth up to 220mm

#### TTCH Wall Ties

Lengths: For open cavities up to 259mm



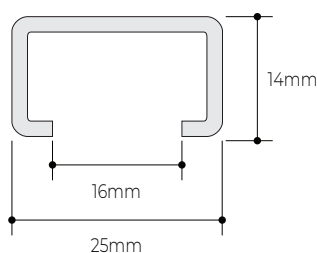
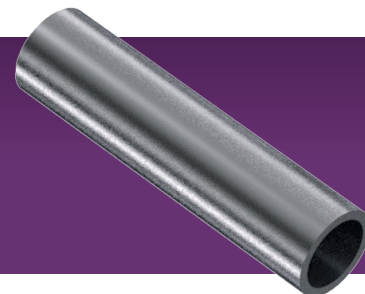
visit [superiorsections.com](http://superiorsections.com) for more information or call **01922 620333**

Superior Sections Ltd, 32 Regal Drive, Walsall Enterprise Park, Walsall, West Midlands WS2 9HQ E: [sales@superiorsections.com](mailto:sales@superiorsections.com)

## Channel Tie Cavity Key

35-59mm	60-84mm	85-109mm	110-134mm	135-159mm	160-184mm	185-209mm	210-234mm	235-259mm
TTCH100	TTCH125	TTCH150	TTCH175	TTCH200	TTCH225	TTCH250	TTCH275	TTCH300

For semi-rigid/flexible insulations, we recommend compression sleeves are used which correspond to the thickness of the insulation specified. The tubes are designed to ensure that the compressive strength and stability of the channel tie system are both achieved and maintained by preventing the channel deflecting into and compressing the insulation during installation, and whilst under normal load.



25/14 channel is available in lengths of 2700mm. It features pre-punched holes at close centres to ensure a fixing position is always located near the end, even when it is cut on site. The channel has a 16mm opening to easily accommodate a drive socket and washer for the CFS Concrete fixings screws.

Superior Sections 25/14 channel features alternate 6mm and 8mm diameter holes to accept different fixings. The smaller diameter holes should be used when fixing to steel or timber. The larger diameter holes are to accommodate fixings for concrete.

Note: Using the incorrect hole and fixing screw combination invalidates the system performance.

### Recommended Wall Tie and Fixing Screw Vertical Centres, based on 25/14 Channel at 600mm Horizontal Centres

Tie Type	Insulation Thickness <sup>1</sup> (mm)	Vertical Tie Spacing (mm)	Vertical Fixing Spacing (mm)
1	Max 220	225	225
2	Max 220	450	337.5
3	Max 220	450	337.5/450*
4	Max 220	450	337.5/450*

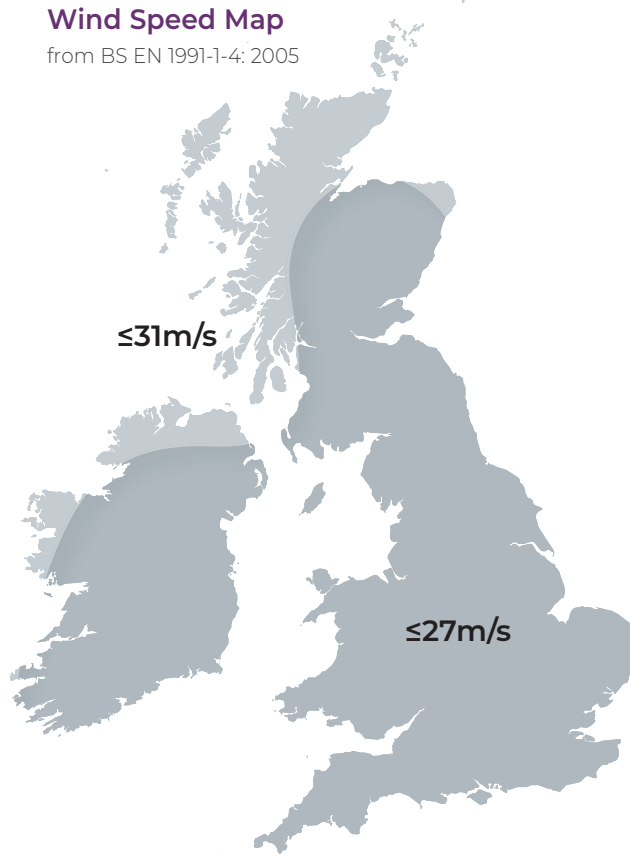
## Wall Tie Types

Required Wall Tie Type	Application	Maximum Building Height (m)	Geographical Location
Type 4	Light duty tie, suitable for box-form domestic dwellings	10	Suitable for flat sites in towns/cities where basic wind speed does not exceed 27m/s and altitude is not more than 150m above sea level
Type 3	Basic wall ties, suitable for residential and small commercial buildings	15	Suitable for flat sites where basic wind speed is up to 27m/s and altitude is not more than 150m above sea level
Type 2	General purpose tie, suitable for residential and small commercial buildings	15	Suitable for flat sites where basic wind speed is up to 31m/s and altitude is not more than 150m above sea level
Type 1	Heavy duty tie, suitable for most building types	Any height	Suitable for most sites. However, for relatively small or unusually shaped buildings in vulnerable areas, tie provision should be calculated

Notes: Refer to PD 6697: 2010 and BS EN 1991-1-4: 2005 for complete information. For information on the certified management systems and standards see [superiorsections.com](http://superiorsections.com)

## Wind Speed Map

from BS EN 1991-1-4: 2005



visit [superiorsections.com](http://superiorsections.com) for more information or call **01922 620333**

Superior Sections Ltd, 32 Regal Drive, Walsall Enterprise Park, Walsall, West Midlands WS2 9HQ E: [sales@superiorsections.com](mailto:sales@superiorsections.com)